



WORX RACING YAMAHA STEERING STEM

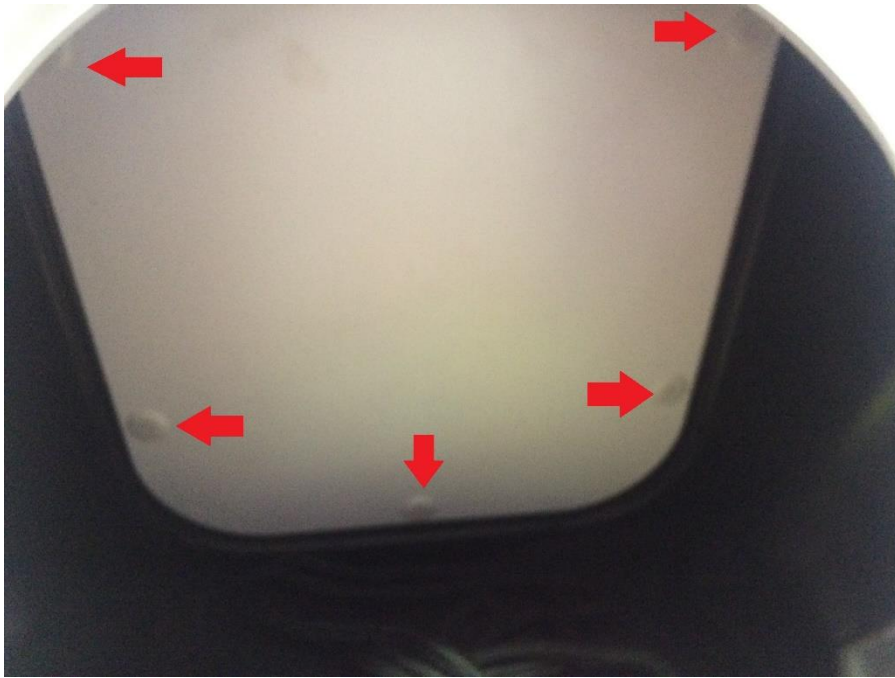
PART # - WR06030

MODELS: All YAMAHA FX Models 2012+

INSTALLATION INSTRUCTIONS

IMPORTANT: READ ALL INSTRUCTIONS BEFORE PROCEEDING WITH INSTALLATION

- 1- Make sure ski is secure and on a flat surface. Remove lanyard and disconnect battery.
- 2- Remove front locker plate from inside front storage compartment by depressing centre of plastic rivet to unlock and pull them out. **Pic 1**
- 3- **Pic 2, 3, 4** Remove OEM bar pad by removing screws with Philips screw driver. Remove OEM trigger by removing 4 socket screws with 4mm Allen wrench. Remove OEM start stop/ Brake lever from handle bar by removing screws. Hang control to side
- 4- Remove handlebar clamps with 12mm socket and wrench. Remove bottom shroud by removing 4 screws and lift off over steering and controls.
- 5- Inside ski Unclip cable off ball joint on steering arm by sliding cover back. Leave cable in mounting bracket. Fold down tabs on plate securing locking bolt **Pic 5**. Remove bolt with 12mm socket and wrench **Pic 7**
- 6- Pull OEM arm down off stock steering stem **Pic 8, 9**. (Only remove metal steering arm at the bottom of the stem **NOT** the plastic arm above) (arm can be remove once bolt it out but can be tight as it is also taped fit to steering stem)
- 7- Loosen bolt holding bracket for lower steering shroud and tilt away from steering **Pic 6**. Lift OEM steering stem straight up to remove from ski. Be careful not to let the bottom steering bush fall into the ski. **Pic 10, 11**
- 8- Remove OEM off throttle sensor from steering and fit to WORX steering stem. **Pic 12**
- 9- Grease Pivot points on new stem. **Pic 11**. Fit WORX Steering stem into OEM location. Make sure OEM bush located in housing.
- 10- Make sure bottom bush is located into correct position before fitting bottom steering arm
- 11- Bottom OEM steering arm will locate onto new WORX stem same as OEM. Fit bottom steering arm to steering stem by pushing up onto keyed section. Add Loctite to bolt and secure arm with OEM bolt. Remember to use locking plate. Once bolt is tight fold up tabs to secure bolt.
- 12- Re-attach steering cable to ball joint on steering arm. Check steering operation is correct and movement is free. Steering alignment will be the same as OEM so if it was correct before it will not need any adjustment.
- 13- Tighten bracket back into position for bottom shroud **Pic 13**.
- 14- Place shroud over steering and fit using bolts and spacers provided. Spacers go between brackets and OEM shroud to give clearance for steering. Make sure cables run thru cut out at bottom of plate **Pic 15**.
- 15- Refit front locker plate with OEM plastic rivets. You are now able to fit 7/8 handlebars of your choice and attach all handle bar controls.
- 16- Once bars are fitted. Reconnect battery. **Fully check for correct Steering operation before use.**



PIC 1



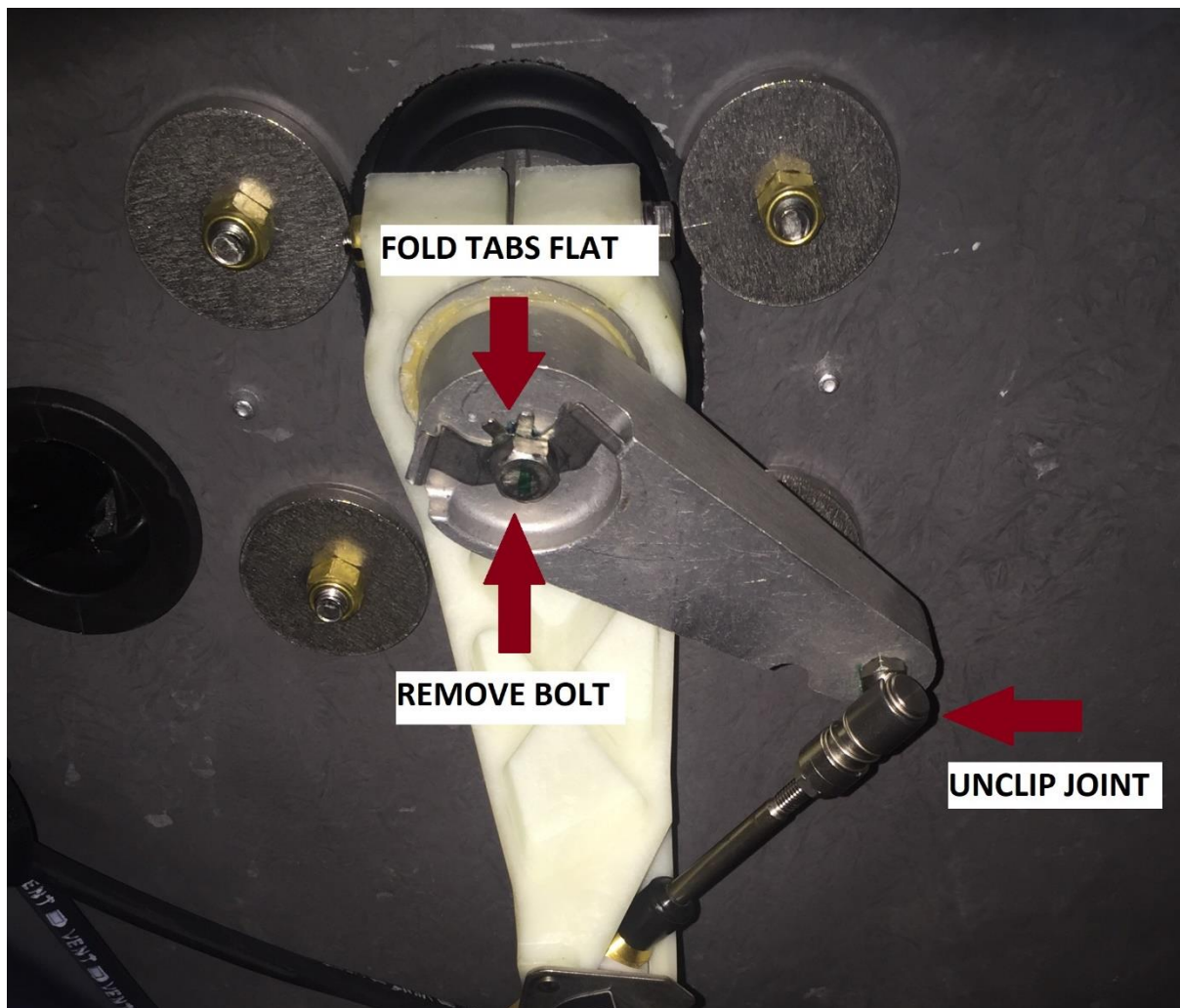
PIC 2



PIC 3



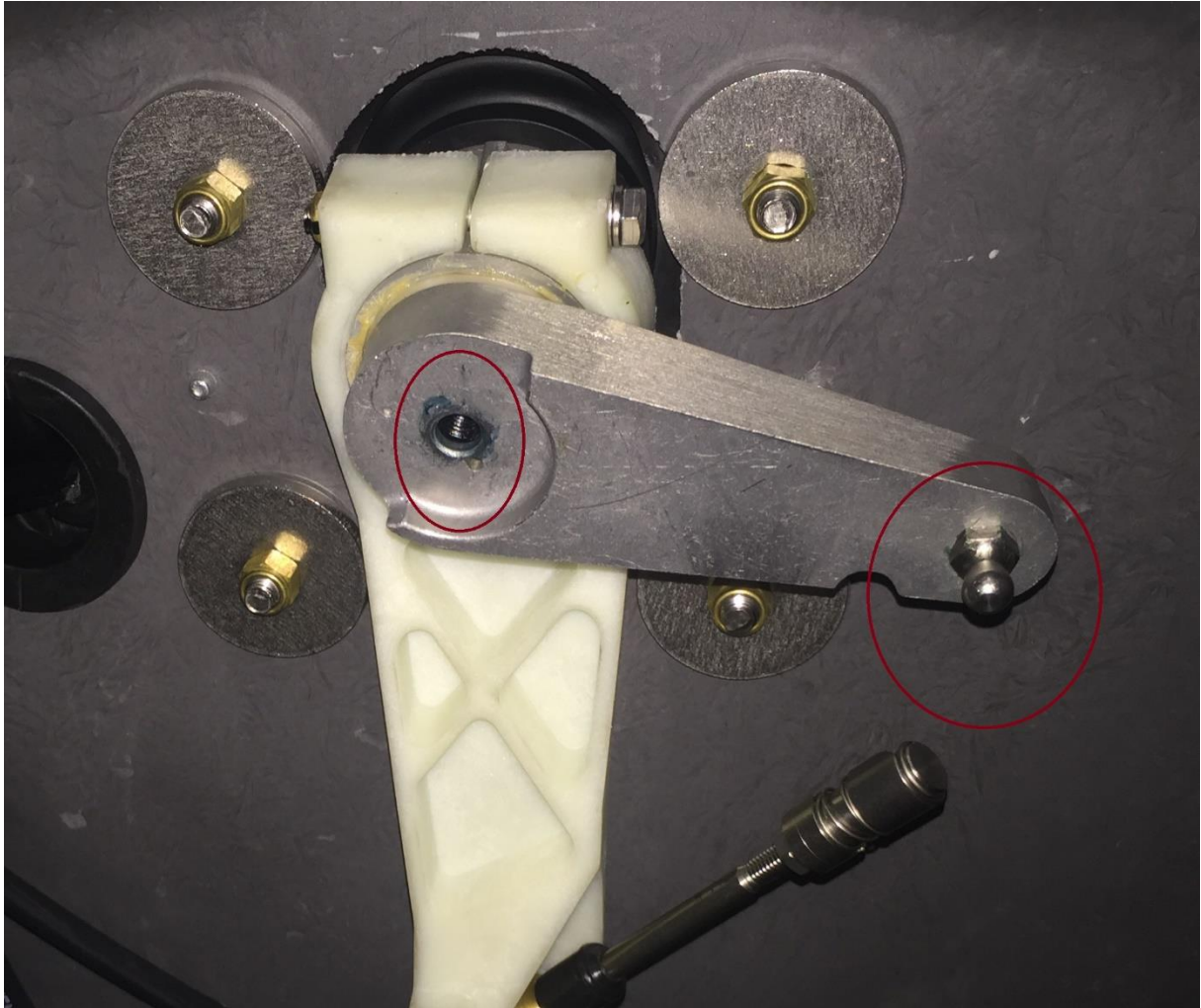
PIC 4



PIC 5



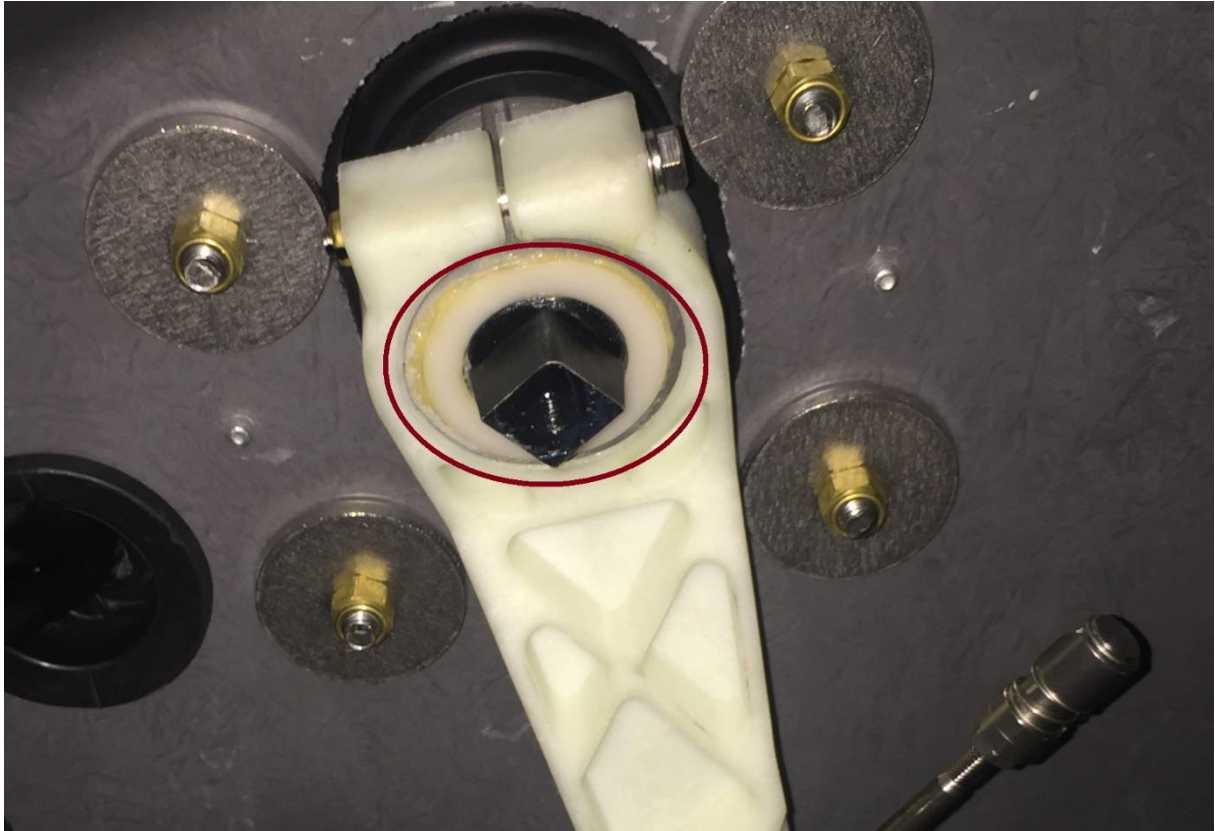
PIC 6



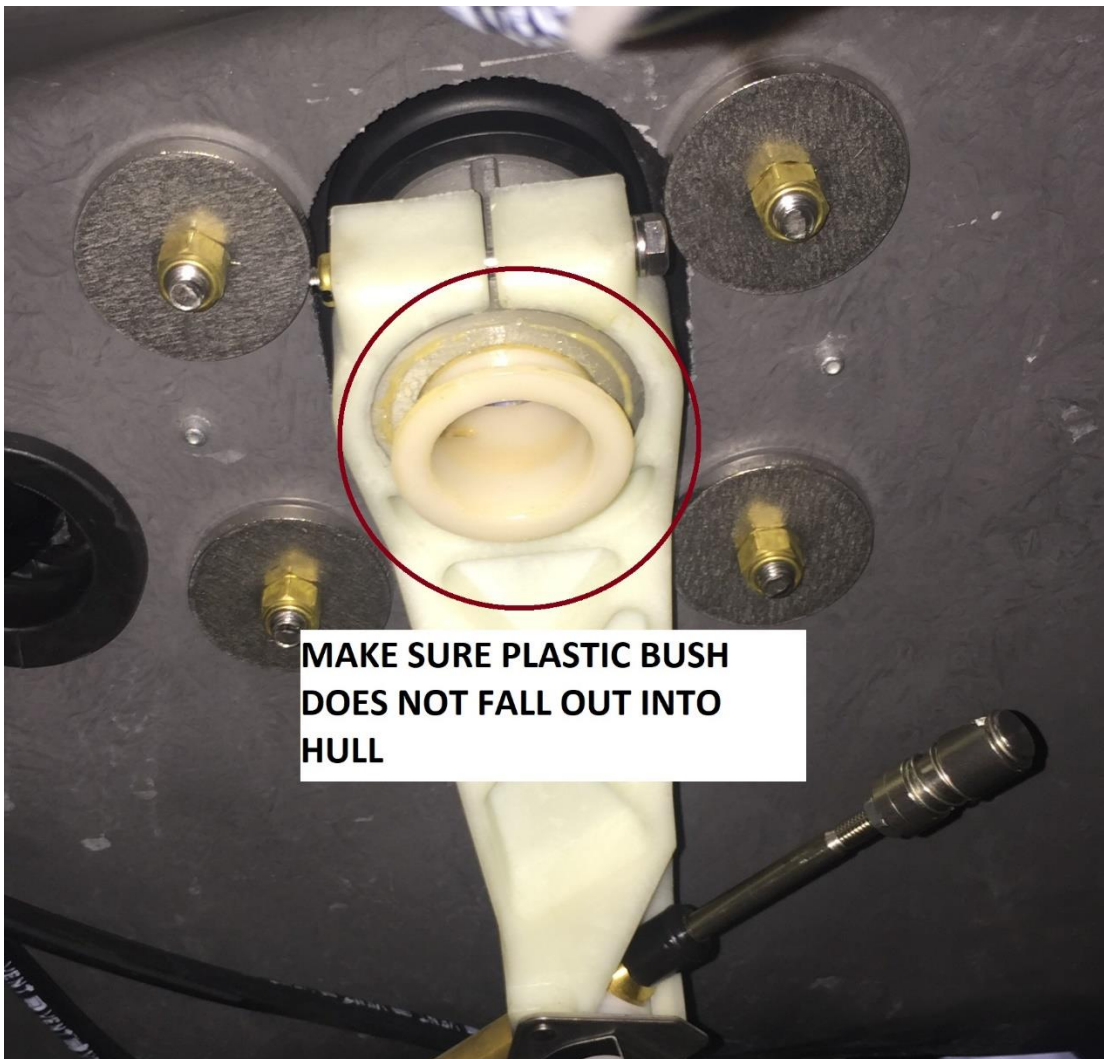
PIC 7



PIC 8



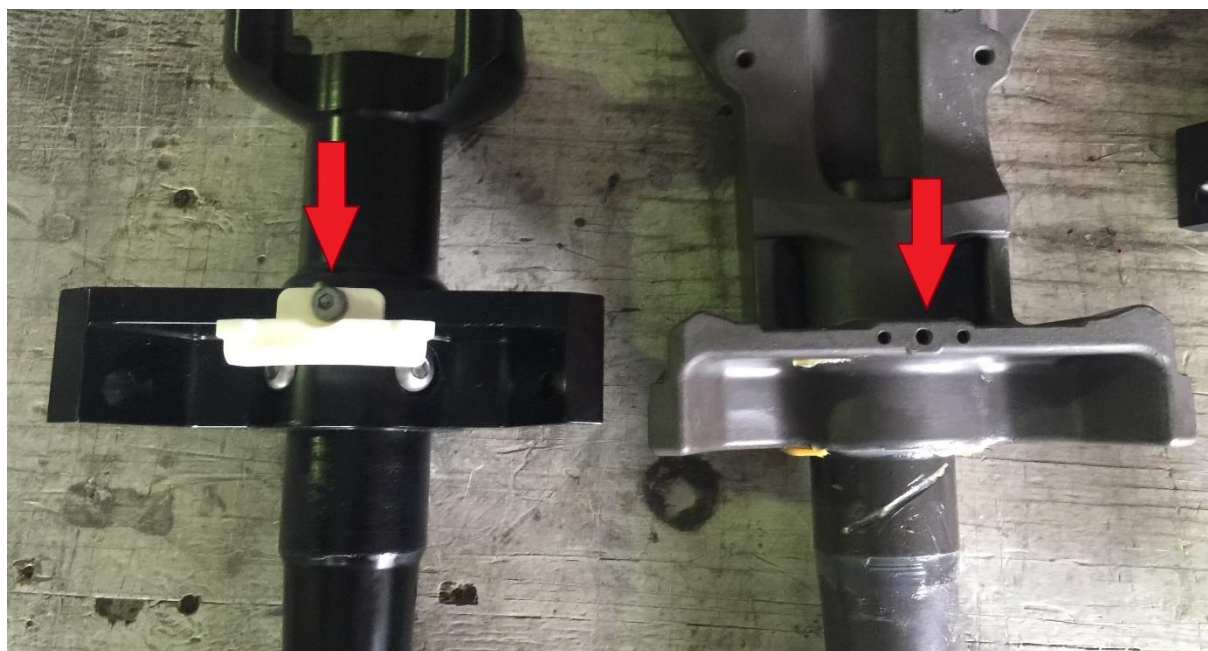
PIC 9



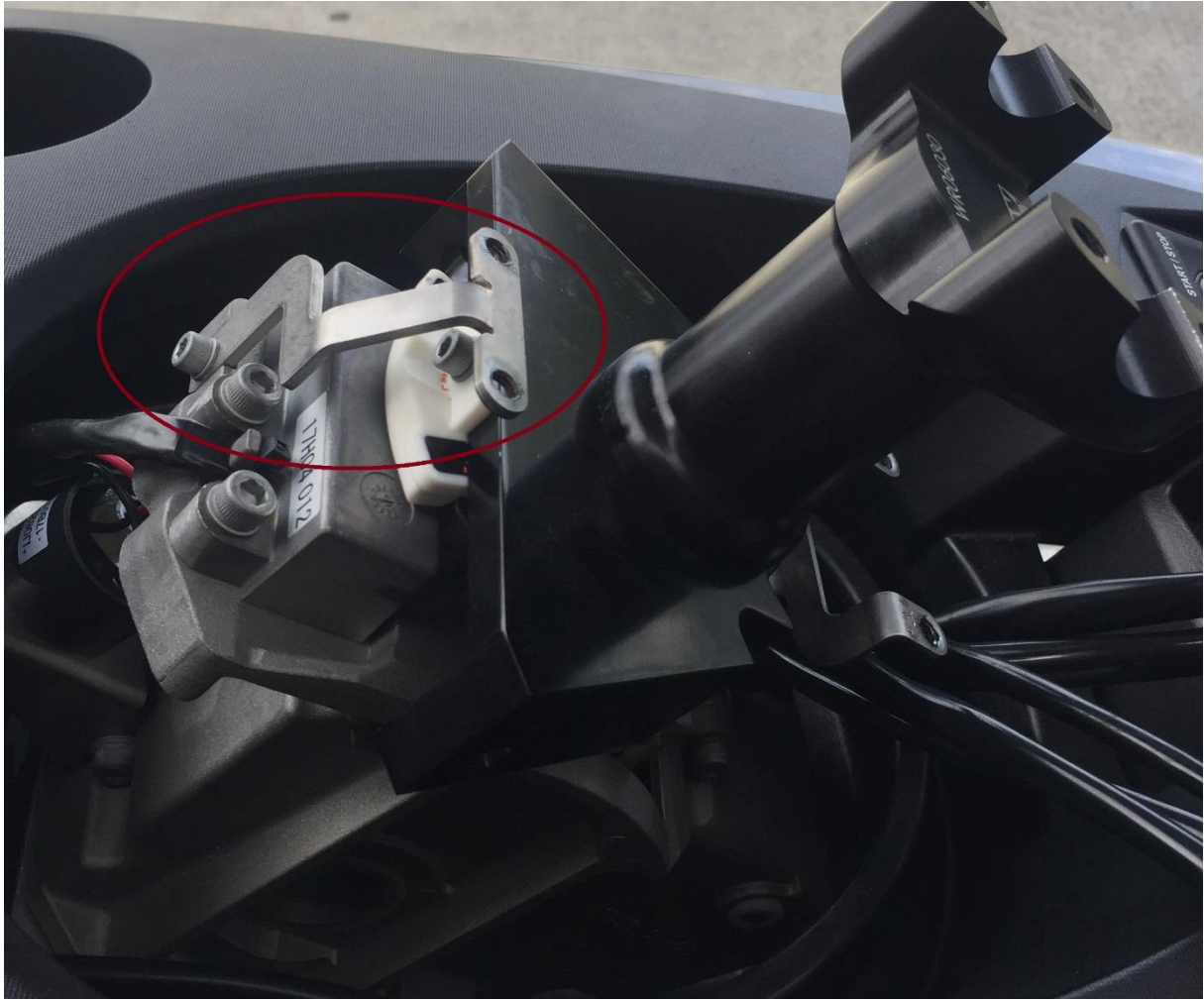
PIC 10



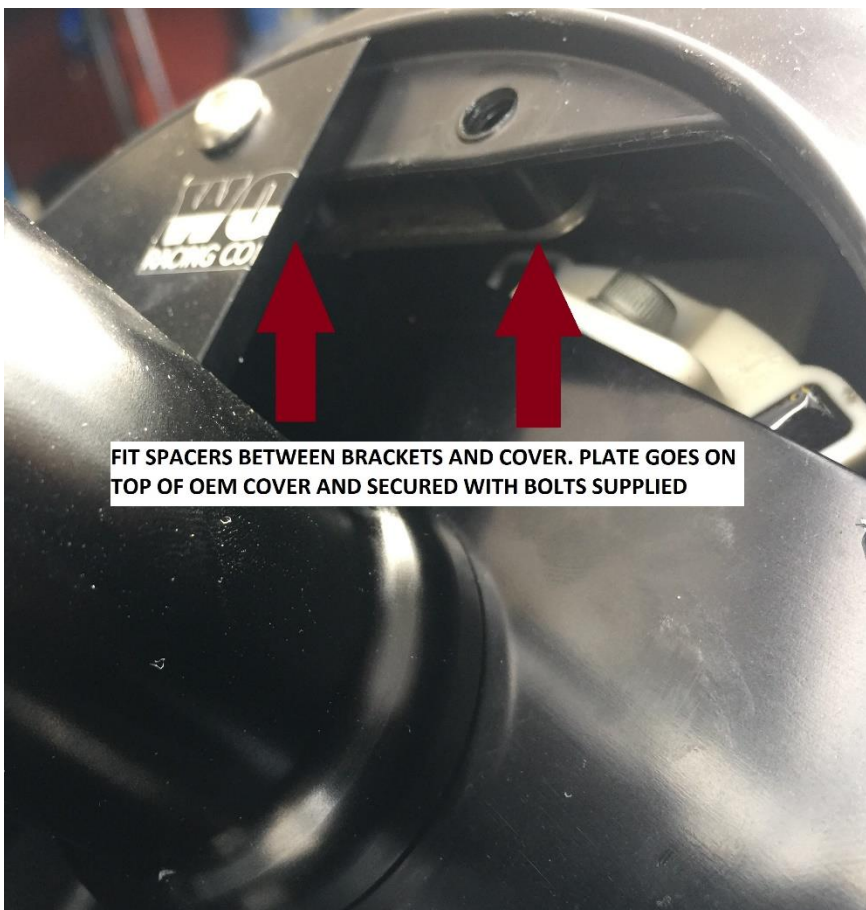
PIC 11



PIC 12



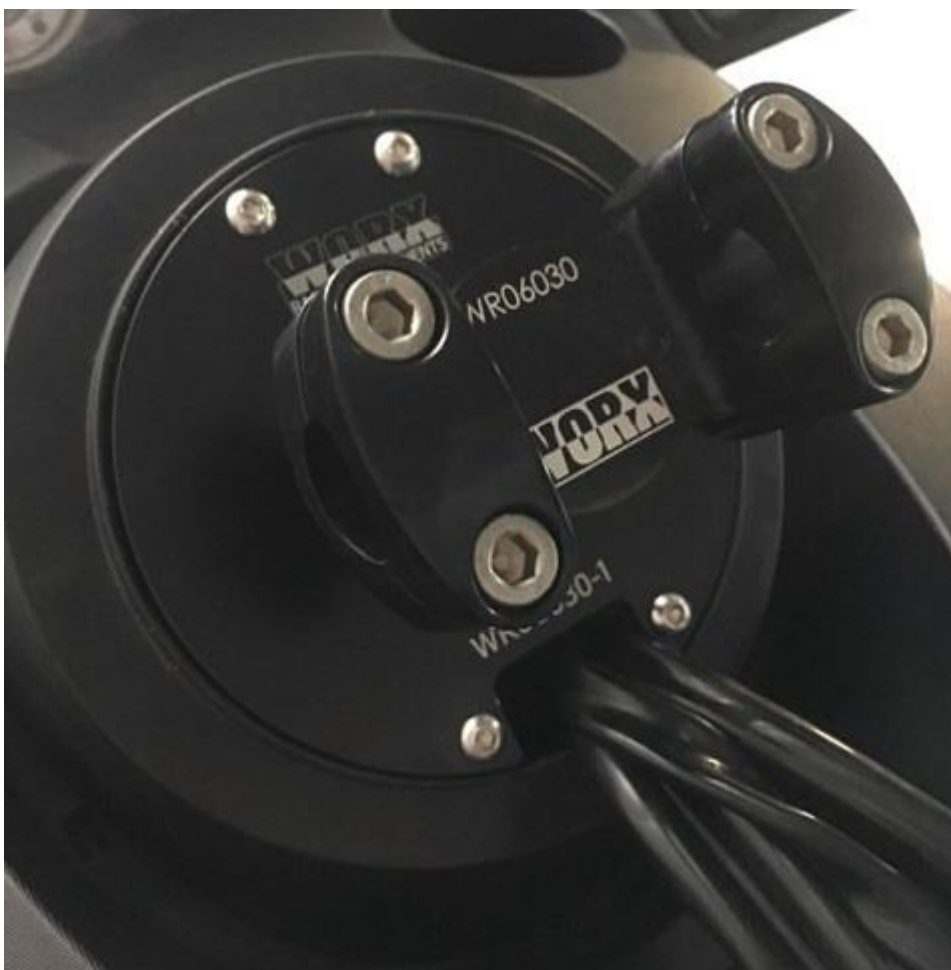
PIC 13



PIC 14



PIC 14



PIC 15

Thank you for purchasing **Worx Racing components** products. We firmly believe that **Worx Racing Components** products are among the finest watercraft parts available. A great deal of time and effort has gone into the design and development of this product to ensure that it will perform to the highest standard and that installation is a relatively straight forward and simple procedure. If you have any questions or comments on the performance and/or installation of our products please contact us at the numbers listed on page one or through your local **Worx** dealer.

www.worx.com.au / info@worx.com.au